



# ANU TO NNU INTERNATIONAL STUDENT HANDBOOK





# Table of Contents

[Table of Contents](#)

[About the ANU to NNU Exchange Program](#)

[Pre-Arrival Tasks and Deadlines](#)

[Overview of Costs](#)

[Understanding Your J-1 visa](#)

[Preparing for Your Visa Interview](#)

[Vaccinations and Health Insurance Requirements](#)

[Vaccinations](#)

[Health Insurance](#)

[How to get an eSIM Card / Joining WhatsApp](#)

[Title IX Training for NNU](#)

[Living in Nampa, Idaho](#)

[Local Information](#)

[Packing for Your Semester](#)

[Banking and Healthcare](#)

[Banking](#)

[Healthcare](#)

[Our NNU Campus](#)

[NNU Campus Amenities](#)

[Services](#)

[Events & Schedules](#)

[Helpful Links](#)

[Arrival and Orientation](#)

[Arrival in Boise](#)

[Host Family Stay](#)

[International Student Orientation \(ISO\) and New Student Orientation \(NSO\)](#)

[Housing and Roommates at NNU](#)

[Seattle Cross-Cultural Trip](#)

[Monthly Cultural and Local Events](#)

[Continued Support](#)



## About the ANU to NNU Exchange Program

Africa Nazarene University and Northwest Nazarene University have joined together in collaboration to build an excellent exchange opportunity for students and faculty. This program provides a cost-effective, enriching cross-cultural experience and progresses students towards graduation.

The **cultural components** of the program include:

1. Cultural immersion experience through living and eating on campus
2. Interaction with other international students at International Club monthly dinners
3. Opportunities to join student-led clubs
4. Community involvement at local churches
5. Cross-cultural peer interactions with NNU students and faculty

The **academic components** of the program will provide students with an excellent opportunity to gain both general education credits and take courses related to their major. All credits count towards graduation. Students participating in this program will take the course "American Culture, History, and Literature" as part of their academic program while at NNU.

While you are here at NNU, there are many programs and activities for you to enjoy:

1. ANU cultural trip to Seattle
2. Journeys Outdoor Club Trips
3. Intramural sports
4. Student Campus events
5. Welcome Week events
6. Weekly chapels
7. Volunteer opportunities



## Pre-Arrival Tasks and Deadlines

- Apply for and obtain passport by May 1, 2023.
- Read and follow the procedure for [How to Apply for an Exchange Visitor Program](#) to understand how to obtain your visa, DS-2019, and pay all required fees.
  - Pay the [I-901 SEVIS Fee](#) and as soon as you receive your DS-2019. **Keep a copy of your receipt.**
  - Visit the U.S. Department of State [website](#) to fill out a Form DS-160, “Nonimmigrant Visa Application” and to pay the visa application fee. **Keep a copy of your receipt.**

**As soon as you receive your DS-2019, complete your DS-160, and pay all fees, ANU can apply for your group visa interview.**

- On the day of your group interview, bring the following documents: an original DS-2019 Form; DS-160 Form confirmation page; passport; photo; and visa application fee receipt. It is important to apply early for your visa and to read the country-specific visa application process on the website of the [U.S. embassy or consulate](#) where you will be interviewed.
- At the end of your interview, the interviewing officer will inform you if your visa is approved or denied. If approved, the interviewing officer will tell you when you should expect to receive your visa. Continue to work with your sponsor to prepare to travel to the United States.
- Purchase [health insurance](#)
  - Submit proof of insurance to [admissions portal](#) by July 15, 2023
- Show proof of a two-dose Meningitis B vaccination series and a TB (tuberculosis) test
  - Submit proof of vaccines to [admissions portal](#) by July 15, 2023
- Buy airline tickets for a flight to [Boise International Airport](#) (BOI) for arrival on August 20, 2022. Departure on December 16, 2023:
  - Communicate flight plans to [bwilley@nnu.edu](mailto:bwilley@nnu.edu) by July 15, 2023
- Obtain eSIM card (via Internet) by August 1, 2023
- Join the ANU WhatsApp group by August 1, 2023
- Complete Title IX training (online) by August 10, 2023





## Overview of Costs

Part of the visa application process is showing that you can afford the cost of the exchange program. Our estimated costs for your semester at NNU is \$1500. A bank statement showing that you have the personal funds of \$1500 is required to move forward with the application.

Expenses Prior to Leaving	
ANU tuition, room, and board for semester	
<a href="#">I-901</a> DS-2019 SEVIS Fee	Currently \$220
<a href="#">DS-160</a> Visa Application Fee	Currently \$160
Health Insurance	<a href="#">ISI Rates</a> (\$0.92-\$1.91 a day) Approximately \$110-230 for 120 days
Airfare	Market Rates Approximately \$1,700-\$2,000
Estimated Expenses at NNU: \$1600	
Cultural Trip to Seattle	\$500 Pay to NNU Global Connections upon arrival
Books*	\$350 Pay to bookseller at NNU
Personal Expenses/incidentals**	\$750 Self-pay as needed

A bank statement showing the ability to cover the \$1600 with personal funds will be needed when you complete the enrollment for the semester. That bank statement will be needed prior to the DS-2019 being sent.

\*Books are expensive and can be ordered once you arrive and know your classes. Costs are variable, but this is an average price per semester.

\*\*Living expenses are extra things you need for your dorm room, laundry, Uber, extra fees for events if desired, extra eating out (You can bring more, but need at least this amount is needed)



NORTHWEST NAZARENE  
UNIVERSITY

## Understanding Your J-1 Visa for the ANU/NNU Semester Exchange Program

A [J-1 visa](#) is for non-degree seeking students. This means you will be attending NNU for one semester, not seeking to graduate from NNU.

This visa is a **nonimmigrant** visa, meaning you are not trying to stay longer in the U.S. It is only for the purpose of attending NNU for a semester.

Our invitation document for you to come to NNU is called the **DS-2019 form**.

When you sign page 1 of the DS-2019 form, you are agreeing to conditions on page 2.  
For the ANU/NNU semester exchange program, it means the following:

- a. Your J-1 visa **requires you to return home for at least two years after your exchange visitor program**. This requirement is part of U.S. law, in the Immigration and Nationality Act, Section 212(e). The visa in your passport will say “Two Year Rule Does Apply, Bearer is Subject to Section 212(E)”
- b. NNU **does not allow extension of stay** for this program.
- c. The J-1 visa **is limited to one semester** for this program.
- d. You must have your approved visa, valid passport, and DS-2019 form with you when you travel to the U.S.
- e. You are required to leave upon completion of the exchange program. ANU and NNU will determine the date of return.
- f. You need to show proof of insurance before arriving in the U.S. and keep it valid during your stay.

The ANU/NNU semester exchange program **DOES NOT offer opportunities for employment on or off campus**. The focus is on academic and cultural exchange.

Once you arrive, The RO will validate you are here and start your program in SEVIS.

Responsible Officer (RO)

Brian “Joe” Willey  
[bwilley@nnu.edu](mailto:bwilley@nnu.edu)  
1-208-467-8768

Alternate Responsible Officer (ARO)

Richard Vasquez  
[rvasquez@nnu.edu](mailto:rvasquez@nnu.edu)  
1-208-467-8499



## Resources and Regulations About Your J-1 Visa:

[J-1 Exchange Visitor Program Participant Welcome Brochure](#) (PDF)

[J-1 Exchange Visitors' Rights and Protection](#) (PDF)

[J-1 Visa Process](#) reviews how to apply for your visa.

[Maintaining J-1 Status](#)

## Understanding your DS-2019 Form:

Your J-1 visa *allows you to enter the U.S.* Your DS-2019 Form *invites you to NNU and keeps you in the country.*

Our invitation document for you to come to NNU is called the **DS-2019 Form**. This form and the SEVIS number on it personally belongs to you, not NNU. This form is what helps you apply for a visa, and shows proof to Customs and Border Patrol that you are a student.

The DS-2019 Form, understanding its regulations, maintaining compliance of these regulations, and understanding the consequences of noncompliance is **your** responsibility. By keeping this form up-to-date with your RO or ARO at NNU, you should remain in compliance.

[About your DS-2019 Form](#)

[Page 2 of your DS-2019 Form](#) states the regulations you must follow. Consequences of not following regulations can result in invalidating your DS-2019 Form, requiring you to return home.

When you sign your DS-2019 Form, you are agreeing to conditions on page 2 and that you know you need to communicate any changes listed to your Responsible Officer (RO) or Alternate Responsible Officer (ARO). Please consult with our RO Brian “Joe” Willey, if you have questions or need clarification.



## Preparing for your Visa Interview

“Do’s and Don’ts” during your interview:

- **Do** be honest with all your answers. You are coming for an exchange program to further your education and cultural learning at NNU.
- **Do** have all your paperwork with you.
- **Do** share about your excitement to visit and return to tell others about your experience.
- **Do** mention your family at home.
- **Don’t** talk about jobs in the US.
- **Don’t** talk about immigrating or moving to the US.

For more information, including what to bring to your interview, please see the following from the U.S. State Department:

- [Interviews & Documents](#)





# Vaccinations and Health Insurance Requirements

## Vaccinations

United States immigration law requires visa applicants to obtain certain vaccinations (listed below) prior to the issuance of an immigrant visa. Specific information can be found here at [travel.state.gov](https://travel.state.gov)

- |   |  |
|---|--|
| <ul style="list-style-type: none"><li>● COVID-19</li><li>● Hepatitis A</li><li>● Hepatitis B</li><li>● Influenza</li><li>● Influenza type b (Hib)</li><li>● Measles</li><li>● Meningococcal</li></ul> | <ul style="list-style-type: none"><li>● Mumps</li><li>● Pneumococcal</li><li>● Pertussis</li><li>● PolioRotavirus</li><li>● Rubella</li><li>● Tetanus and diphtheria toxoids</li><li>● Varicella</li></ul> |
|---|--|

To avoid delays in the processing of your visa, you should have your vaccination records available for the panel physician's review at the time of your immigrant medical examination. Consult with your regular health care provider to obtain a copy of your immunization record.

### **You will need to provide your complete vaccination records to NNU.**

- Additionally, NNU requests that international students show proof of a two-dose Meningitis B vaccination series and a TB (tuberculosis) test.
- Provide the copy of your your complete vaccination record (including two-dose Meningitis B and TB (tuberculosis) test to your Responsible Officer **by July 15, 2023**:

Brian "Joe" Willey  
[bwilley@nnu.edu](mailto:bwilley@nnu.edu)  
1-208-467-8768



## Health Insurance

It is required for J-1 and J-2 visa holders to have health insurance to remain in compliance with your visa regulations. NNU accepts [International Student Insurance](#) that meets the minimum requirements for J-1 and J-2 visa holders.

For more information about health insurance requirements, please see the following links:

1. [Overview](#)
2. [What is a J-1 Visa?](#)
3. [Health Insurance Requirements for the J-1 Visa](#)

Please purchase coverage from the time you enter the US until your return date out of the country. This can be purchased in monthly installments or all at once. ***\$48 a month plan is the recommended coverage.***

The screenshot shows the ISI website interface. At the top left is the ISI logo and the text "INTERNATIONAL STUDENT INSURANCE". To the right are navigation links for "Student Health" and "Travel Medical". Below this is a dark blue form with white text and input fields. The form contains the following fields:

- Primary Destination \*: United States (dropdown)
- Student Status: J1 Visa (dropdown)
- School Name: Northwest Nazarene Univ.
- State: Idaho (dropdown)
- Birth Date \*: yyyy-mm-dd (text input)
- Home Country: Choose one: (dropdown)
- Citizenship: Choose one: (dropdown)
- Start Date \*: 2022-08-22 (text input)
- End Date \*: 2022-12-19 (text input)

At the bottom of the form is an orange button with the text "» Get Quotes «".

**You will need to provide a copy of your insurance card or policy to your Responsible Officer **by July 15, 2023:****

Brian "Joe" Willey  
[bwilley@nnu.edu](mailto:bwilley@nnu.edu)  
1-208-467-8768



## How to get an eSIM Card / Joining WhatsApp

Before your arrival in the U.S. you will need to obtain an eSIM Card. An eSIM is a virtual programmable card that does what physical SIM cards do. You can buy an eSIM card online.

The advantage to an eSIM card is that it is active immediately upon purchase, and you will be able to use your phone upon arrival in the U.S. without having to physically change your SIM card in your phone.

You **DO NOT** have to cancel your plan with your local carrier or take out your current SIM card when using an eSIM. Both can work at the same time, if you wish to keep that number active.

We have found that Mint Mobile works well for international students. Please find out more information, including what phones are compatible with using an eSIM on the [Mint Mobile](#) website. Costs range from \$15-30 a month depending on your desired plan.

**Plan to have your eSIM purchased by August 1, 2023.**

5G · 4G LTE DATA <b>4GB</b> /MO	5G · 4G LTE DATA <b>10GB</b> /MO	5G · 4G LTE DATA <b>15GB</b> /MO	<b>UNLIMITED</b>
<b>\$15</b> /MO	<b>\$20</b> /MO	<b>\$25</b> /MO	<b>\$30</b> /MO
<ul style="list-style-type: none"><li>• Unlimited talk &amp; text</li><li>• Nationwide coverage</li><li>• Uses 5G or 4G LTE, whichever is strongest</li></ul>	<ul style="list-style-type: none"><li>• Unlimited talk &amp; text</li><li>• Nationwide coverage</li><li>• Uses 5G or 4G LTE, whichever is strongest</li></ul>	<ul style="list-style-type: none"><li>• Unlimited talk &amp; text</li><li>• Nationwide coverage</li><li>• Uses 5G or 4G LTE, whichever is strongest</li></ul>	<ul style="list-style-type: none"><li>• Unlimited talk &amp; text</li><li>• Nationwide coverage</li><li>• 35GB of 5G · 4G LTE Data</li></ul>
<a href="#">View Details</a>	<a href="#">View Details</a>	<a href="#">View Details</a>	<a href="#">View Details</a>
\$45 for 3 months of service	\$60 for 3 months of service	\$75 for 3 months of service	\$90 for 3 months of service

Once you have your eSIM and your U.S. phone number, you will need to share it with us [here](#) so we can add you to our WhatsApp group **If you do not currently have WhatsApp, we will need you to download it to your phone.** This will be the main way we communicate as you travel to the U.S. and throughout your semester here at NNU. **Plan to have joined our WhatsApp group by August 1, 2023**

Many functions at NNU require a U.S. phone number. Having an eSim will help you make calls, stay in contact with others when away from Wi-Fi, feel safer, and be able to access 2-Step authentication software while logging into required NNU technology.



## Title IX Training for NNU

Title IX is a U.S. federal law that prohibits discrimination on the basis of gender in any federally funded education program or activity, including protection against sexual harassment, misconduct, and assault.

As part of your preparation to come to the United States and NNU, we have an online training session that will familiarize you with Title IX laws. This training is intended to help our campus community understand, prevent, and respond to concerns about sexual harassment, sexual misconduct, and sexual assault. As a community, we take these matters very seriously, and therefore we have made this training mandatory for all new international students. The training will help you understand your obligations under the University's Title IX Sexual Misconduct Policy.

Check your NNU email for the Title IX training.

**This training must be completed by August 10, 2023.**

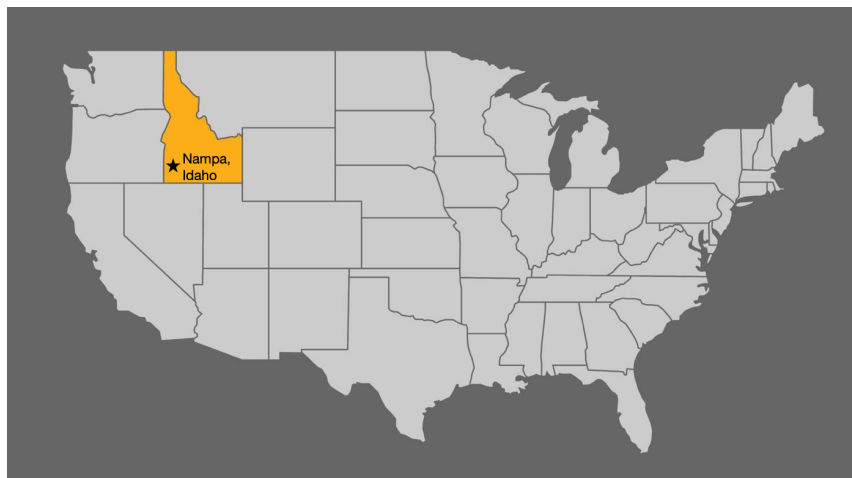




## Living in Nampa, Idaho

Nampa is the 3rd largest city in the state of Idaho with approximately 100,000 people. It is 20 miles (32 km) to Boise, the state capital. Nampa is a quieter city that has a focus on family life, outdoor recreation, and nature. With the Boise foothills to the east and Owyhees to the southwest, there are many opportunities for scenic views and beautiful sunsets.

Much of Nampa is residential, but there is a small downtown area that has a weekend market, coffee shops and eclectic restaurants. Nampa also has a wonderful public library, a civic center that has musicals and other arts-related events, and hosts a rodeo and horse parade each year in honor of Idaho's past and current history. Within a 2-hour drive from Nampa, you can visit natural hot springs, walk through national forests, go river rafting, hike mountains, and see wildlife.



Nampa has many restaurants, retail stores, and grocery stores. Within a 10-minute walk of [our campus](#), you can find many amenities including the following:

- McDonald's
- Dutch Bro's Coffee
- Taco Bell
- Northwest Christian Credit Union  
(where we will help you set up a bank account)
- Family Dollar Store
- Urgent Health Care Medical Clinic
- The UPS Store
- Multiple convenience stores

A bit further away (within 1 mile), you can find Walmart and Albertsons, where you can purchase groceries, Walgreens Drug Store, the Harward Recreation Center, and one of the 27 city parks.

### Local Information:

#### City Information

<https://www.cityofnampa.us/>

<https://www.cityofboise.org/>

#### Travel Information

<https://visitidaho.org/>

[Treasure Valley Recreation Guide](#)

#### Local News

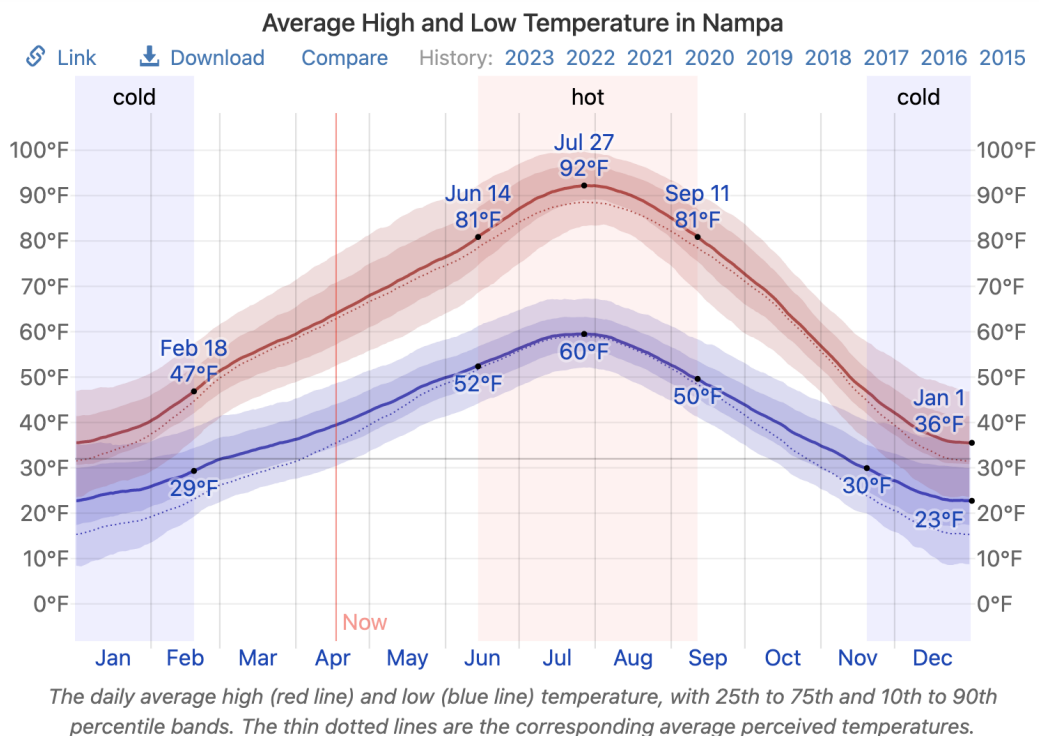
<https://www.idahopress.com/>

<https://www.idahostatesman.com/>



## Packing for Your Semester

Nampa, Idaho is located in the Pacific Northwest of the United States. The summers are short, hot, and dry, while winters are very cold, snowy, and cloudy. You will arrive in the hottest part of the year with temperatures averaging 90°F (32°C) but when you depart, it will likely be snowing and below freezing.



We suggest that you bring clothing for hot weather upon arrival. You can also pack for cooler weather (jeans, boots, jackets, winter coats, gloves, hats) or you can purchase items here once you arrive.

There are several [thrift stores in town](#) that sell secondhand clothing at a low price. Thrift store shopping can be a fun way to get what you need at a cheap price.

During your first few days we will take you shopping to get personal items you need for your stay. Here are some estimated costs for items you will need:

<ul style="list-style-type: none"><li>• Shampoo or Conditioner \$2-10 each</li><li>• Bar soap (8 bars) \$5-7</li><li>• Body wash \$2-5</li><li>• Toothpaste \$2-4</li><li>• Deodorant \$3-6</li></ul>	<ul style="list-style-type: none"><li>• Hand soap \$2-4</li><li>• Dish soap \$2-4</li><li>• Desk lamp \$10-15</li></ul>
---	---



# Banking and Healthcare

## Banking

When you arrive in Nampa, one of the first things we will do is arrange for local banking. Our chosen banking institution is *Northwest Christian Credit Union*. It is located right next to our campus, making it convenient for students, and it is a strong supporter of the university.

On the day we set up banking, we will walk to the bank together and everyone will fill out the required forms to obtain a bank account. You will also need to bring some money to open your account. We suggest at least \$20. Once your account is open, you can do the following:

- Apply for a debit card (takes 7-10 days to arrive at your university post box)
- Have funds deposited into your account (can be sent from your family overseas)
- Withdraw funds in person, or from an ATM machine

If your family wants to send money to your U.S. bank account, here is how they can do that:

### INCOMING WIRE INSTRUCTIONS

#### **FIRST CREDIT TO:**

CATALYST CORPORATE FEDERAL CREDIT UNION  
6801 PARKWOOD BLVD PLANO, TX 75024  
ABA: 3119 9051 1

#### **FURTHER CREDIT TO:**

NORTHWEST CHRISTIAN CREDIT UNION  
NAMPA, ID 83686  
ABA/ACCOUNT #: 3241 7344 8

#### **FINAL CREDIT TO:**

MEMBER NAME AND ACCOUNT # (Checking)

You can always call Northwest Christian Credit Union for help, if needed.

#### **Main Office**

716 E. Colorado Ave.  
Nampa, ID 83686  
Phone: (208) 466-0916



## Healthcare

NNU has a [healthcare clinic and wellness center](#) on campus. You can make appointments to see a nurse, get medical treatment and prescriptions, and arrange for counseling services.

If you are sick and need to see a doctor, please let the Global Connections Office know right away. We will help you get the support you need. One major difference in the U.S. is that hospitals are generally reserved for emergencies (broken bone, heart attack, severe cuts and blood loss, or accident injury). For illnesses, it is best to visit the NNU Healthcare Clinic. Your wallet will thank you after the bill comes! If you have any questions for how to seek treatment, just reach out and we will direct you to the best location for your needs.

If there is an emergency, please immediately call 911 and contact the Global Connections Office, or have a friend do so. We will always be able to have in-person NNU support for you in case of an emergency.





## Our NNU Campus

NNU's campus spans 90 acres and is set in the heart of Nampa, Idaho. NNU is situated on a 90-acre, park-like campus with 34 buildings including seven residence halls and apartment complexes, a baseball field, softball field, soccer field, tennis courts and an Olympic-sized track.

You can see a drone tour [here](#) and a student-led walkthrough tour [here](#)!



### LIVING SPACES

- 1 Corlett Hall
- 2 Culver Hall
- 3 Dooley Hall
- 4 Ford Hall
- 5 Holly Housing
- 6 Kirkeide Apartments
- 7 Maple Five-plex
- 8 Olsen Apartments
- 9 Sutherland Hall

### LEARNING SPACES

- 10 Ceramics & Sculpture Studio
- 11 Education, Social Work and Counseling (ESWC)
- 12 Fine Arts Building
- 13 Holstrom Business Center
- 14 Leah Peterson Learning Commons
- 15 Riley Library
- 16 Thomas Family Health & Science Center
- 17 Wiley Learning Center
- 18 Williams Hall

### GATHERING SPACES

- 19 Admissions
- 20 Brandt Center
- 21 College Church of the Nazarene
- 22 Finkbeiner Recreation Area
- 23 Student Center, (former)
- 24 Howard & Mary Conrad Student Commons
- 25 Lanman Prayer Garden
- 26 Lucille Little Prayer Chapel
- 27 Little Theatre
- 28 Mary Shaffer Sculpture Park
- 29 Wiley Alumni House

### ATHLETIC SPACES

- 30 Bohner Track & Field
- 31 Halle Softball Field
- 32 Intramural Athletic Field
- 33 Johnson Sports Center (JSC)
- 34 Lee Athletic Complex
- 35 Soccer & Lacrosse Turf Field
- 36 Tennis Courts
- 37 Vall Baseball Field

### RESOURCE SPACES

- 38 Brick House - Health Services
- 39 Campus Safety Office
- 40 Counseling Services
- 41 Emerson Administration Building
- 42 Facilities Services
- 43 Nampa Police South Substation



GO DIGITAL

SCAN ME

**i** If you need more information or directions around campus, please visit Campus Safety in building 39 or call 208.467.8911  
**♿** We offer accessible parking spaces on the streets or parking lots at every front entrance. Call Campus Safety with questions.



NORTHWEST NAZARENE UNIVERSITY



## NNU Campus Amenities

NNU has a vast array of campus amenities to help make your time in the United States one of learning, safety and good health, spiritual support, and guidance from our faculty and staff. The links below will take you to different pages on our website where you can find more information about how we work alongside you as an NNU student!

### SERVICES

[Campus Safety](#)  
[Career Development](#)  
[Center for Academic Success & Advising](#)  
[Library / Learning Commons](#)  
[Prior Learning Assessment](#)  
[Registrar](#)  
[Wellness Center](#)

### EVENTS & SCHEDULES

[Calendar](#)  
[Chapel Schedule](#)  
[Academic Calendars](#)  
[New Student Orientation](#)

### CONTACT INFO

[Campus Offices](#)  
[Academic Departments](#)  
[Student Life](#)

Responsible Officer:  
Brian "Joe" Willey  
[bwilley@nnu.edu](mailto:bwilley@nnu.edu)  
1-208-467-8768

### HELPFUL LINKS

[Campus Map](#)  
[NNU and University Lingo](#)  
[Johnson Sport Center](#)  
[NNU Sports](#)  
[Campus Store](#)  
[Chapel Policy](#)  
[Help Desk & IT](#)  
[Institutional Review Board](#)  
[Residence Halls](#)  
[Sodexo Food Services](#)  
[Student Email \(Gmail\)](#)  
[Student Government \(SGA\)](#)  
[Student Clubs](#)  
[Club Calendar](#)  
[International Club](#)  
[Student Handbook](#)  
[Textbooks](#)  
[Title IX](#)  
[University Mission & Ministry](#)

### RECEIVING MAIL AT NNU:

Any mail, Amazon orders, or packages for you during your stay at NNU can be sent to:

NNU  
(Your Name)  
c/o Joe Willey  
623 S. University Blvd.  
Nampa, Idaho 83686, USA



## Arrival and Orientation

### Traveling, Customs and Border Patrol

When you arrive in the United States, you will need to clear Customs and Border Protection. Here is a helpful website to share what you should [Know Before You Arrive](#).

### Arrival in Boise

When you arrive at the Boise Airport, follow the signs to the Luggage Claim (hint: follow all the people getting off your plane). Sometimes arriving flights deplane on the lower level of the airport. If this is the case, take the elevators upstairs and continue to follow signs to the Luggage Claim. NNU representatives will be there outside of the secure area to greet you!



### Host Family Stay

For the first few days, you will be staying with a Host Family. These families are all part of local Nazarene churches and are excited to meet you and help you begin to adjust to the U.S. They will provide you with beds, showers, some of your meals, and transportation to/from NNU for your orientation events. It's likely they will keep in touch with you all semester, inviting you over for a home-cooked meal or to their church or other local events. We hope that you find this connection to a Host Family a positive experience as you start your new journey in Idaho.



## International Student Orientation (ISO) and New Student Orientation (NSO)

Please note that there are two new student orientations. The first is an [international student orientation](#) from August 20-24. There is also a [new student orientation](#) for ALL students from August 25-28. You will get to participate in both!

An **online Academic and Technology Orientation** will be available during the first week of August. You will be notified once it is open via email. There will be several tasks for you to do before arriving.

NSO continues **in person** on campus on Friday, August 25th, when you will move into the dorms. You will be living on campus from now on!

From Friday the 25th through Monday the 28th, there will be many activities such as:

- Admissions check-in
- Residence hall check-in
- A community fair showcasing local restaurants, businesses, and services
- Receptions hosted by your academic department
- Picnic on the Quad
- Sports games
- Ice cream social
- Disk golf tournament
- Journey trip off campus
- Student Government led events



## Housing and Roommates at NNU

Below you will see a list of your roommates at NNU and your housing location. Most of our exchange students will be housed in the [Corlett Hall](#). Each apartment houses four students, and includes two bedrooms, a kitchen, a bathroom, and a living area. Corlette also has a main lobby with tvs, games, lounge and study areas, a kitchen, and laundry facilities.

Another possible housing location would be [Olsen Apartments](#). This complex is located next to Corlett Hall. Each apartment houses four students, and includes two bedrooms, a kitchen, a bathroom and a living area. Laundry facilities are in a detached laundry room that is shared with other apartments. Laundry facilities are run via an app system that you can add money to as needed. The cost to wash a load of laundry is \$2.00. To dry clothes in the dryer is also \$2.00

Both Corlett and Olsen include kitchens with ovens and stovetops and refrigerators for you to prepare meals outside of your cafeteria meal plan. Dorm rooms are cleaned by students.

We suggest bringing a small memento from your home country for your NNU roommates and some pictures to hang up to remind you of family and home!

Last/Family Name	First/Given Name	Male/Female	Roommates	Housing Location
Muco	Kynthia	Female	Ahyeon Cho, Faith Lelya, Ellie Stale	Corlett 109
Mukiza	Nikkie	Female	Rihye Lee, Lisa Onserio, Naomi Oyiengo	Corlett 103
Oyiengo	Naomi	Female	Rihye Lee, Lisa Onserio, Nikkie Mukiza	Corlett 103
Lelya	Faith	Female	Ahyeon Cho, Kynthia Muco, Ellie Stale	Corlett 109
Onserio	Lisa	Female	Rihye Lee, Naomi Oyiengo, Nikkie Mukiza	Corlett 103
Ng'ong'a	Isaac	Male	Josh Nelson, Caleb White, Timothy Kiprop	Corlett 121
Kiprop	Timothy	Male	Josh Nelson, Caleb White, Isaac Ng'ong'a	Corlette 121
Kemoi	Prosper	Male	TBD	TBD

There will be items you will need to purchase for your dorm room, and you should work alongside your roommates for purchasing things such as cleaning supplies, kitchen items, and other shared necessities. Your dorm room will be provided with the following items:

<b>Furniture:</b> <ul style="list-style-type: none"> <li>• Bed</li> <li>• Study desk</li> <li>• Storage for clothes (dresser/closet)</li> <li>• Table and chairs</li> </ul>	<b>Other Furnishings:</b> <ul style="list-style-type: none"> <li>• Pillow</li> <li>• Sheet set</li> <li>• Blanket</li> <li>• Trash can</li> <li>• Laundry basket</li> <li>• Hangers</li> </ul>
---	--





## Seattle Cross-Cultural Trip

Part of your experience at NNU includes a trip to a major U.S. city. This fall, you will be traveling to Seattle, a coastal city in the Pacific Northwest, about 8 hours from Nampa. Seattle is surrounded by mountains, temperate rainforests, and water, and is a major port city. As Washington's largest city, it's home to both Microsoft and Amazon headquarters, professional NBA, NFL, and MLS teams, and is well known for being the birthplace of Starbucks coffee. During your trip, you will get to experience iconic landmarks and places of cultural importance.

### Cost: \$500

- This price was included in the Overview of Costs document and is part of the \$1,500 you needed to show in your bank account for acceptance into the exchange program.
- When you arrive, the Global Connections Office will work with you to pay the \$500 fees for the trip, which will be due September 1, 2023.

### Overview of Trip

- Traveling cross-country by van, you will experience the vastly different landscapes of the Pacific Northwest. From high desert plains to volcanic hills to snow-covered basalt mountains to land eroded by ancient glaciers, this 8-hour trip will give you a small picture of varying topography of the United States.

When in Seattle, you will get to experience a variety of activities. We will visit some of the following:

- [Seattle Walking Tour](#)
- [Space Needle](#)
- [Museum of Pop Culture](#)
- [Pike Place Market](#)
- [Seattle Aquarium](#)
- [Starbucks Reserve Roastery](#) / Visit the 1st Starbucks location
- A ride across Puget Sound aboard a [ferry](#) / Seattle [harbor cruise](#)
- Potential [sporting event](#) or [cultural events](#) as time permits

Seattle is a multicultural city with a smorgasbord of amazing restaurants. While in Seattle you will eat at a wide variety of ethnic restaurants:

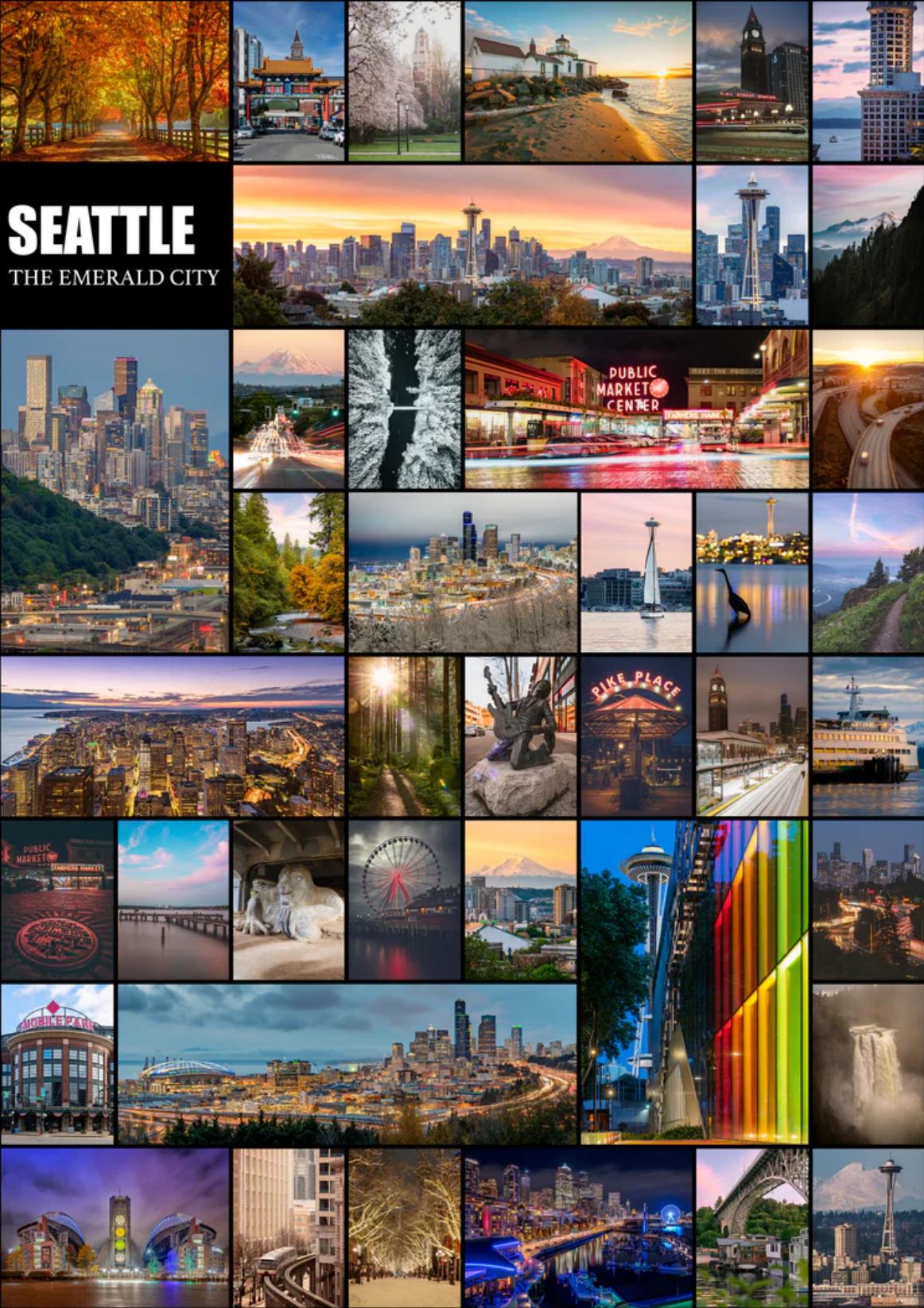
- **Chinese:** Din Tai Fung, a world-famous Chinese dumpling restaurant (Dinner)
- **American NW:** Pike Place Chowder, a Seattle classic with fresh seafood (Lunch)
- **Indian:** Tandoori Hut (Dinner)
- **Greek:** Golden Olive (lunch)
- **Italian:** Zeek's pizza (lunch)
- **Ethiopian:** Zobel (Dinner)





# SEATTLE

THE EMERALD CITY





# International Student Activities

## Monthly Cultural and Local Events:

### Monthly International Dinners at an NNU Employee's house

#### August

##### Western Idaho Fair

- Thursday, August. 24
- 4-10 p.m.
- Cost of tickets and \$10 for dinner provided

#### September

##### Boise Balloon Classic

- Saturday, Sept. 2
- 6-8 a.m. Balloon Launch
- Breakfast at [Big City Coffee](#) afterwards (self-pay, \$15)

#### October

##### Public Art Walking Tour in Boise's Downtown

- Saturday, Oct. 21
- 9:30 and 11:00 a.m. 15 person limit/2 groups
- Lunch at [Boise Fry Company](#) afterwards (self-pay, \$15)

#### November

##### An American Thanksgiving

- Thursday, Nov. 23
- Hosted by local church families

#### December

##### Christmas Lights & Cocoa Tour, Scentsy Meridian Campus

- Friday, Dec. 1
- 7:00 p.m.
- [Meridian Route](#) (some homes synced to music!); end at Scentsy Campus

#### Ice Skating in Caldwell

- Open from Nov. 17 onwards



## Continued Support

During your semester at NNU, continued support will be offered through the Global Connections Office. If you have questions, need assistance, or just want to stop by for a chat, we are here to help! We're excited to offer the following during your semester at NNU:

### **Cohort Class for exchange students: American Culture, History, and Literature \***

- This is a new addition to our exchange program! All ANU students will be enrolled in this course that will be co-taught with your ANU visiting professor and an NNU professor. Guest lecturers will be brought in to share insights into culture, American history, and key literature that has shaped the country. Ample opportunities for asking questions, delving deeper into cultural differences and reflection will be encouraged in this interactive class.

### **Monthly Dinners for International Students**

- Each month, all international students at NNU are invited to a free, multicultural dinner themed after one of our guest countries' cuisine! If you love to cook, NNU's president and wife would love to help you prepare some of your native dishes to share with the international community. This is a great opportunity to get to know those at NNU who have international connections, eat some great food, and fellowship off-campus!

### **Monthly Cultural Outings for International Students & Roommates**

- Another new addition this fall is an opportunity to experience American and Idaho culture through [5 unique experiences](#), once a month. This fall, we will host excursions to:
  - August: [Western Idaho Fair](#)
  - September: [Spirit of Boise Balloon Classic](#)
  - October: [Boise Arts & History Walking Tour](#)
  - November: Thanksgiving Dinner with an American Host Family
  - December: [Christmas Lights & Cocoa Tour](#) / [Ice Skating](#)
- Excursions (other than Thanksgiving Dinner) will cost approximately \$15 each for self-paid food and drink.

### **Open Office Hours**

- Stop by anytime to visit our offices in the Leah Peterson Learning Commons, aka, the library! We are here for you as you adjust to the ins and outs of a new country.

\* denotes required participation of ANU exchange students





We look forward to welcoming you and helping make this semester at NNU one you will never forget! Please feel free to reach out to the Office of Global Connections at [studyabroad@nnu.edu](mailto:studyabroad@nnu.edu) if you have any questions. We're happy to help and can't wait for you to be here on campus.

**Welcome to NNU!**

